

Recommended PCB Layout
Bottom View

Material and Finish

Body: PBT Thermoplastic
UL94V-0 Rated
Color: Black

Contacts: Brass

Contacts Plating Options:
Standard: Tin Plating
30 Option: 30u" Gold Plated

Inner Shield: Copper Alloy,
Tin Plated

Outer Shield: Steel, Tin Plated

Electrical Characteristics

Contact Rating:
7.5A Max. @ 48V DC

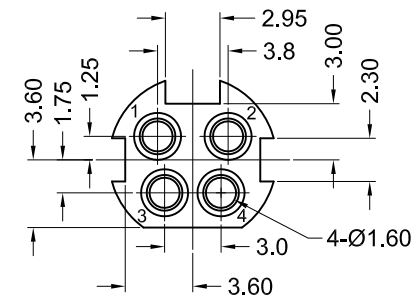
Insulation Resistance:
50 Megohms Min. at 250V DC

Dielectric Withstanding Voltage:
500V AC RMS for 1 Min.

Contact Resistance:
30 milliohms Max.

Operating Temperature:
-40°C to +75°C

Face Detail



Part Number	Contact Area Plating Finish
KPJX-4S-S	Tin Plating
KPJX-4S-S-30	30u" Gold (30 Option)



Tolerances

X.X ± 0.35
X.XX ± 0.25
Unless Stated
Otherwise

REV.	DATE	DESCRIPTION	REV. BY	CHK. BY	DRAWN BY	DATE
A6	03/04/11	Remove Dim	S. Vien	H. MA	H. MA	4/13/05
A7	04/20/11	Remove Dim.	S. Vien	H. MA		
A8	05/26/11	ECO #11-035	S. Vien	H. MA		
A9	04/04/12	ECO #12-011	S. Vien	P. DalCanto	UNITS	mm
A10	01/28/13	ECO #13-006	S. Vien	P. DalCanto		
A11	11/13/13	ECO #13-088	C. Kelleher	P. DalCanto		

KPJX-4S-S

DC Power Jack, RoHS Compliant

4 Position, Shielded

