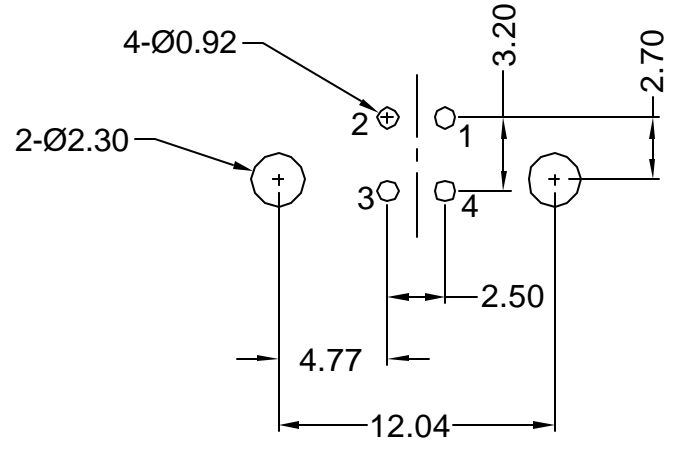


Recommended PCB Layout
(Top View)



Materials and Finish

- Shell: Copper Alloy
- Plating- Nickel or Tin Plating
- Insulator: UL94V-0 Rated
- PBT Thermoplastic
- Color- White or Black
- Contacts: Copper Alloy
- Plating Options:
 - Standard-Gold Flash on Contact Area, Tin on Solder Tail, all over Nickel
 - 30 Option- 30u" Gold on Contact Area, Tin on Solder Tail, all over Nickel

Specifications

- Contact Current Rating: 1A max.
- Contact Resistance: 30 milliohm max.
- Insulation Resistance: 1000 Megohm min.
- Dielectric Withstanding Voltage:
 - 500V AC (sea level)
- Insertion Force: 3.57kg max.
- Extraction Force: 1.02kg min.
- Operating Temperature: -55°C to +85°C
- Durability: 1500 mating cycles min.



Part Number	t_gold	Color
KUSBVX-BS1N-W	Flash	White
KUSBVX-BS1N-W30	30u"	White
KUSBVX-BS1N-B	Flash	Black
KUSBVX-BS1N-B30	30u"	Black

Tolerances
X.X ± 0.25
X.XX ± 0.15
Unless Stated Otherwise

REV.	DATE	DESCRIPTION	REV. BY	CHK. BY	DRAWN BY	DATE
A0	5/18/05	New Drawing	H. MA	C. Furumasa	H. MA	5/18/05
A1	7/12/05	Release Drawing	H. MA	N/A		

KUSBVX-BS1N-xxx

USB B-type Receptacle, RoHS compliant

Vertical, 4 Position, Through Hole

